

KM 20 - 180 Cyclones



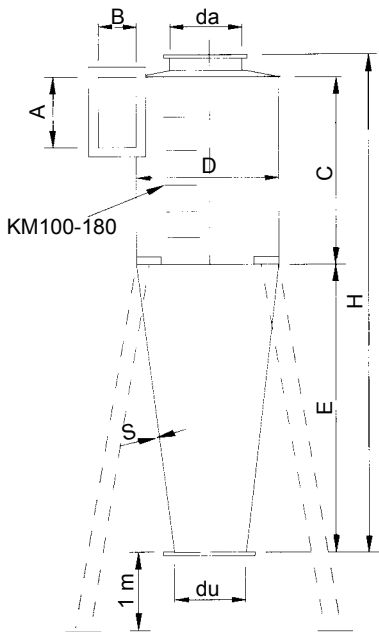
The Kongskilde KM 20 - 180 cyclones are designed for separation of dust and particles from air.

Volumes from 1,000 to 35,000 m³/h can be handled by the KM range of cyclones.

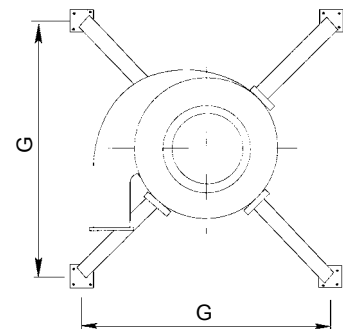
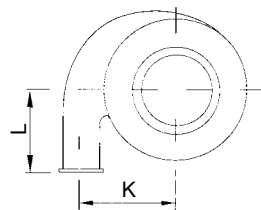
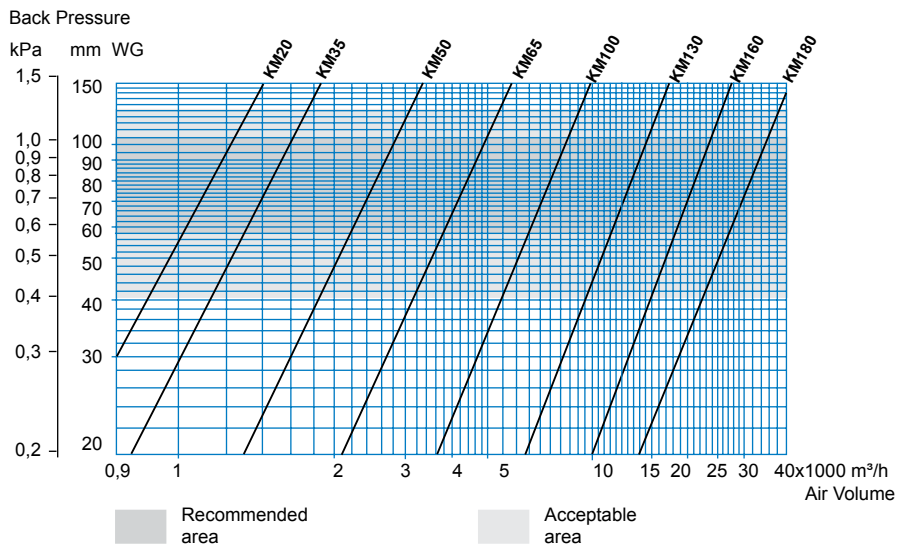
KM 20 - 180

The KM 20 - 180 cyclones are made of 2 mm and 3 mm steel plate. The cyclones are of an all-welded construction and afterwards painted grey. Various outlet transitions are available on request.

Dimensions



Technical Data



Type	A mm	B mm	C mm	D mm	da mm	du mm	E mm	G mm	H mm	S mm	K mm	L mm	Weight kg	Standard inlet tapers/lenght mm
KM20	230	100	570	400	225	160	820	1050	1465	2	234	240	49	OK160/325
KM35	285	125	710	500	250	200	1020	1200	1790	2	290	300	59	OK160/353
KM50	350	160	710	500	250	200	1020	1200	1790	2	308	300	70	OK200/385
KM65	445	200	995	700	400	300	1405	1530	2500	2	419	420	115	Ø315/355
KM100	560	300	1500	1000	550	400	2050	1960	3725	2	615	600	270	Ø500/390
KM130	750	400	2000	1280	700	450	2820	2305	5090	3	782	700	565	Ø700/440
KM160	1100	500	2000	1600	800	550	3150	2690	5420	3	1050	900	685	Ø900/490
KM180	1500	500	2500	1800	1000	650	3450	2790	6250	3	1150	950	875	Ø1000/540



Kongskilde Industries A/S
 DK-4180 Sorø, Denmark
 Tel. +45 57 86 50 00
 Fax +45 57 86 51 00
 E-mail: mail@kongskilde.com
 www.kongskilde.com